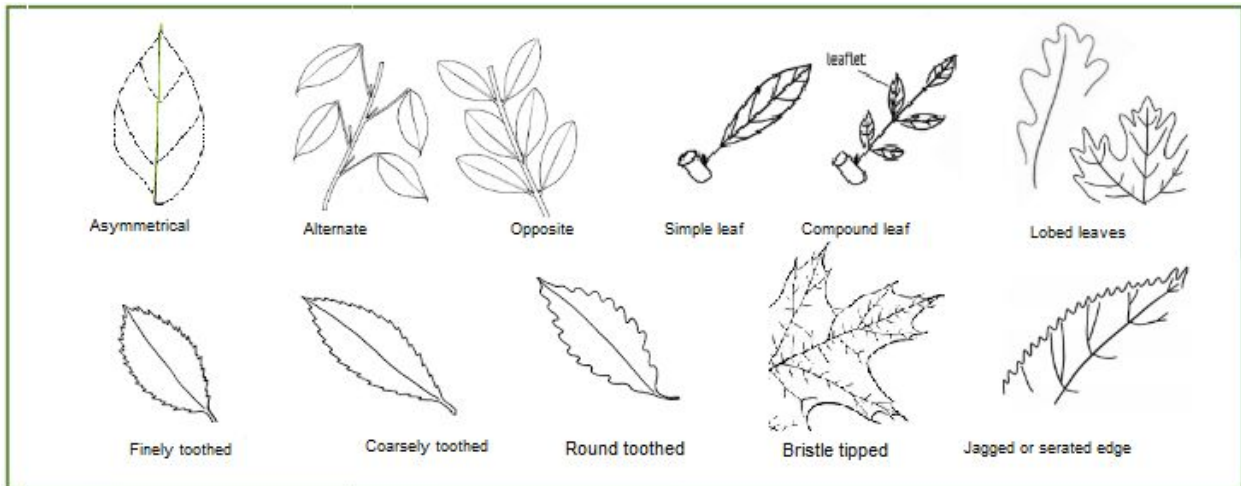
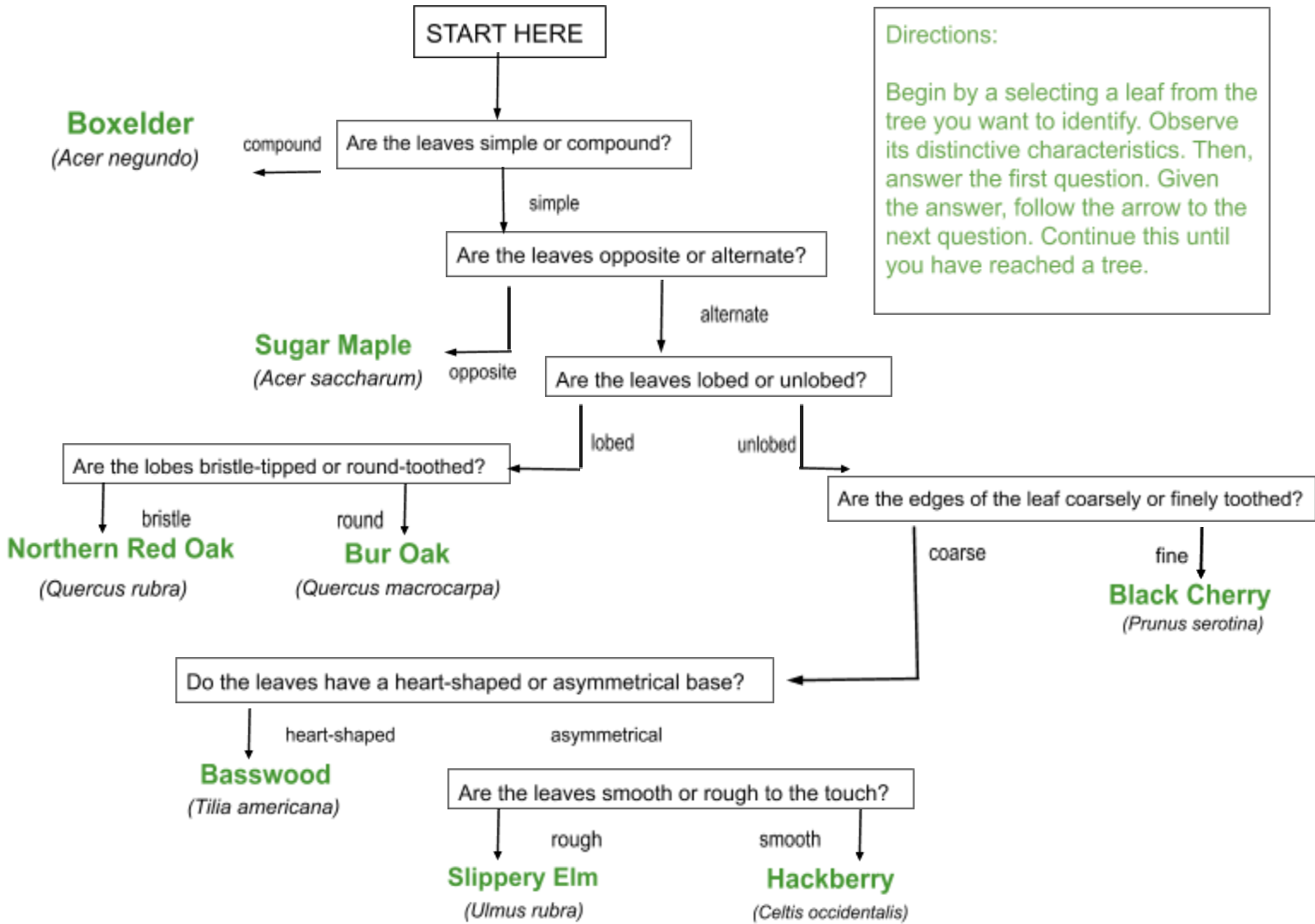


Turkey Creek

Dichotomous Key for Leaves

Directions:
Begin by selecting a leaf from the tree you want to identify. Observe its distinctive characteristics. Then, answer the first question. Given the answer, follow the arrow to the next question. Continue this until you have reached a tree.



There are many other tree and shrub species at Turkey Creek. Can you find a species that is not on this sheet? Many other species can fall under these categories. This key is not an exhaustive key for all species and exists only for the purpose of this activity.

Turkey Creek Nature Preserve

 Turkey Creek

Trails



A to B and back
distance=1.1 miles

